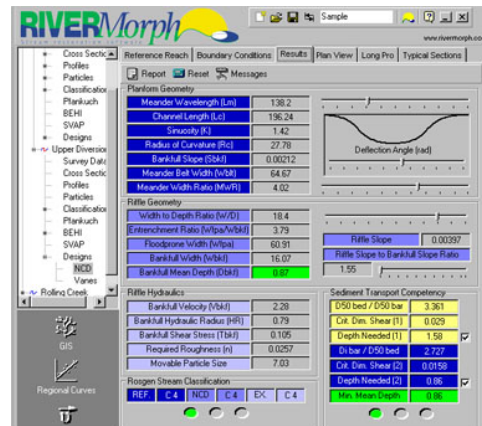


RIVERMorph 2-Day Workshop

WORKSHOP SUMMARY

This 2-day workshop will focus on procedures for processing geomorphic data and performing Natural Channel Design using the RIVERMorph Software. Participants will gain an understanding of geomorphic data which must be obtained to properly evaluate a stream system, will be given a review of geomorphic data collection techniques and will learn how to process and interpret geomorphic data through hands-on exercises using the RIVERMorph Software. Specific items to be covered include:

- Geomorphic Data Collection Overview
- Analysis of Cross Sections
- Analysis of Longitudinal Profiles
- Particle Size Distribution Calculations
- Automated Stream Classification
- Development of Dimensionless Ratios
- Stream Assessment Techniques
- Use of RIVERMorph Calculators and Tools
- Vane Design
- Natural Channel Design Theory
- Design Example



TARGET AUDIENCE

Professionals involved in stream data collection, assessment of stream channels, design of natural stream systems and review of stream projects will benefit from this course. This may include government agency personnel, consultants, researchers, educators and restoration professionals.

ABOUT RIVERMORPH

RIVERMorph is the first comprehensive database oriented software program for processing geomorphic data and performing Natural Channel Design calculations. The program was developed to simplify the tedious and time consuming calculations associated with processing geomorphic data and to provide means to quickly review collected data. RIVERMorph features a state-of-the art graphical user interface and incorporates a number of tools/techniques to analyze and assess streams.

ABOUT THE INSTRUCTOR

George Athanasakes, P.E. is the Program Manager of RIVERMorph and holds BSCE and MSCE degrees from the University of Louisville. For over a decade, Mr. Athanasakes has served as the project manager and/or design engineer on numerous stream restoration and assessment projects incorporating natural channel design principals. His involvement with these projects has included conceptual level planning, preliminary and final design, permitting, assistance during construction, and post-construction monitoring. Due to his broad stream restoration experience, Mr. Athanasakes regularly participates in stream restoration training workshops and has presented on the subject at many national conferences.